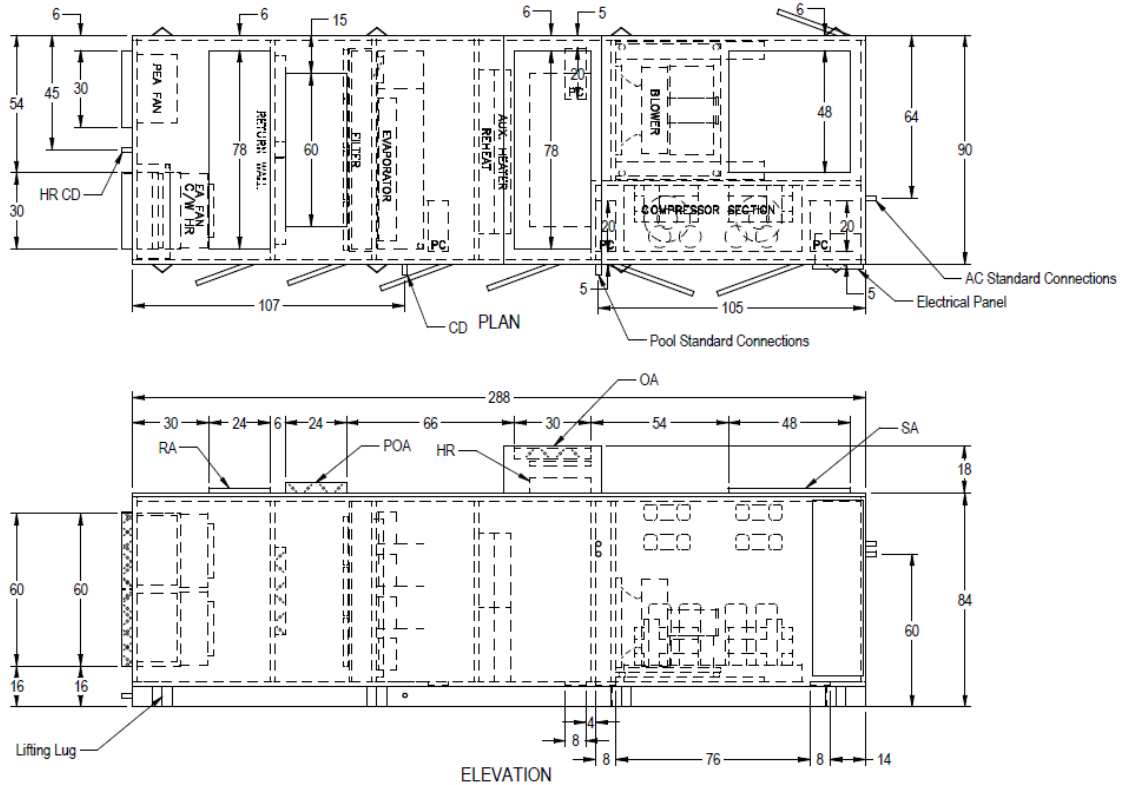


Specifications



Unit Design Conditions and Capacities

Nominal Air Flow (CFM @1" ESP)	20000
Cabinet Air Flow Range	15000-20000
Outdoor Air Flow (CFM)	3000
Minimum Exhaust Air Flow	3300
Purge/Economizer Air Flow	16700
Unit Weight (lbs)	12000
Total Compressor Heat Rejection (MBH)*	643.2
Total Cooling Capacity (MBH)*	514.6
Sensible Cooling Capacity (MBH)*	317.0
Moisture Removal Capacity (lbs/hr)*	240.2
Dry Cooler Model	NG-040
Capacity (MBH @95F)	650
Field Pipe Size (inch)	2.5"
Pool Heating:	
GPM / ΔP (PSI)	70/5
Connection (in.)	2
Pool Heating (MBH)	390

*Capacities at 82F/60%RH.

Voltage	208-240/03	460-480/03	575-600/03
MCA	239	115	93
MOP	300	125	110

Standard Features

- CommandCenter microprocessor
- WebSentry internet monitoring (1 yr free labor warranty when connected)
- Protocol design
- Direct drive plenum fans
- Fully dipped coils
- Multiple supply orientations
- 2" Double walled cabinet
- 2 Year parts warranty

Optional Features Shown

- Heat recovery on minimum exhaust/outside air
- Purge/Economizer
- Hot water auxiliary heating coil
- Pool water heating

Available Options

- BACnet IP, Modbus or LonWorks interface
- Indoor or outdoor cabinet design
- Outdoor packaged available
- Heat rejection to cooling tower or geo-loop
- Gas, electric, or hot water auxiliary heating
- Remote CommandCenter panel
- Motorized OA damper with occupied schedule
- Mirrored cabinet
- Higher or lower supply airflows or static pressures
- Higher or lower OA/EA airflows
- Unit mounted disconnect
- Extended warranties